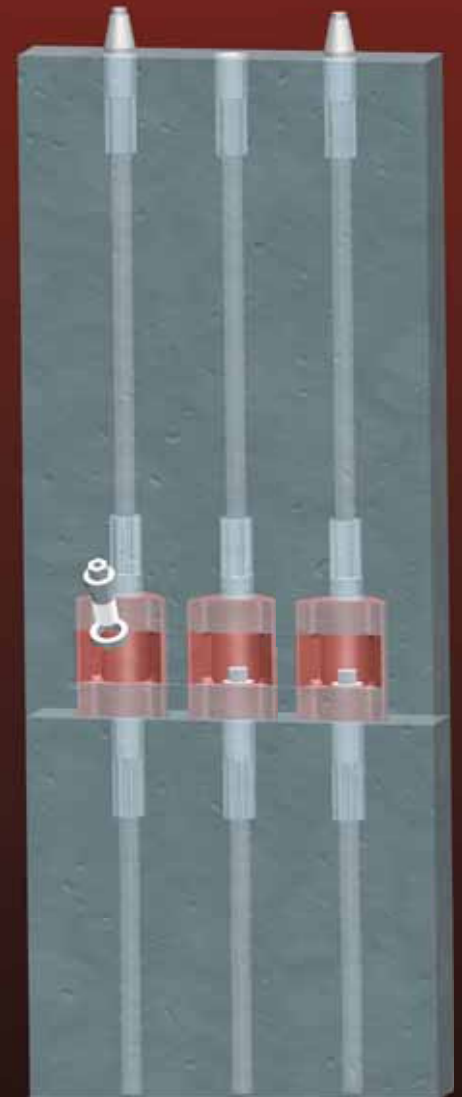
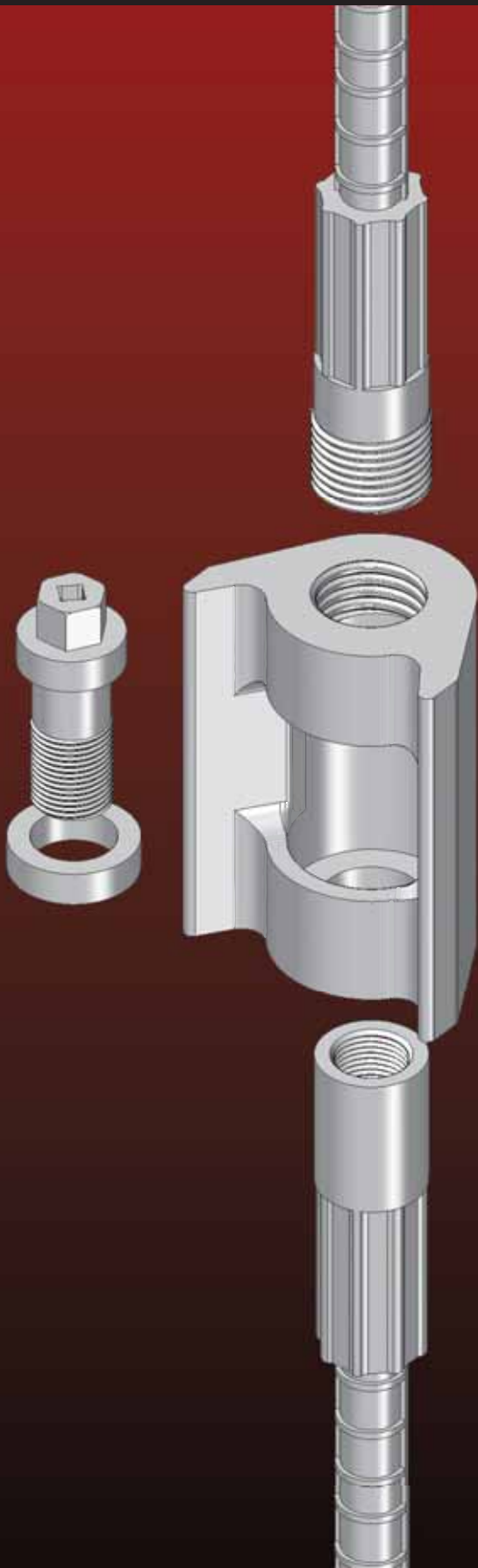


THE **QLOK** SYSTEM





Tomorrows Construction Solutions-Today

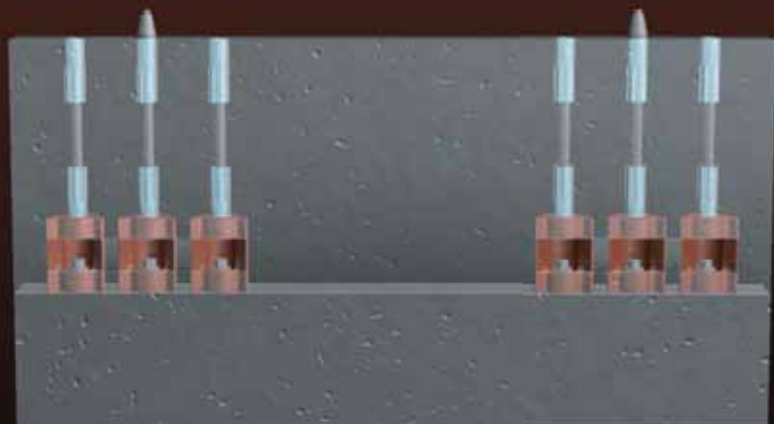
PATENT No. 7,975,444

- ✓ PRECAST CONSTRUCTION - PURELY MECHANICAL CONNECTION.
- ✓ MODULAR SYSTEM - IDEAL FOR MATCH-CAST JOINTS.
- ✓ ALLOWANCE FOR CONCRETE SHRINKAGE BOWING AND CREEP INCLUDED.
- ✓ PROVISION FOR LONGITUDINAL REINFORCEMENT LENGTH ADJUSTMENT.
- ✓ CAPACITY - 150% X SPECIFIED YIELD GRADE 60 [420] IN TENSION.
- ✓ SMALL HEX HEAD BOLT - CONVENIENTLY ASSEMBLED & TIGHTENED.
- ✓ REMOVABLE & REUSABLE LOCATING PINS.
- ✓ OPTIONAL PINS TO REACT TO SHEAR FORCES IN EARTHQUAKE ZONES.
- ✓ NO PROJECTING BARS - SAFE TRANSPORTATION OF PRECAST PARTS.
- ✓ STRUCTURAL INTEGRITY - VISUALLY VALIDATED BY INSPECTOR.
- ✓ IMPROVED SHEAR FRICTION BETWEEN ELEMENTS FROM BOLT FORCES.
- ✓ NO GROUT - NO CURE TIME - NO EXTENDED BRACING TIME.
- ✓ NO WELDING - NO CONCRETE DAMAGE FROM HEAT.
- ✓ DUCTILE IRON POCKET MODULE - EASY ACCESS.



The QLOK® System is engineered to connect precast elements using a pocket module and threaded connectors which are attached onto the ends of reinforcing bars.

QLOK® pocket modules and externally threaded connectors are cast in one precast element while internally threaded connectors are cast in the adjoining element. Before pouring concrete, the QLOK® pocket module and internally threaded connectors are aligned using alignment bolts. After the concrete cures, the alignment bolts are removed and the elements are separated. At the jobsite, the elements are re-assembled using alignment pins. Once in alignment, the pins are removed and replaced with QLOK® bolts to permanently and immediately connect the elements together.



As a purely mechanical device, QLOK® is an ideal alternative to welded joints and various grout filled splicing connectors. There is no waiting time for the grout to harden before removing supports. The QLOK® System can carry the weight of the concrete member as soon as assembly in the field is complete.



AND - THE QLOK® SYSTEM CAN BE ASSEMBLED IN ANY WEATHER - HOT OR COLD.

While the information contained in this document is believed to be accurate at the time of publication, BPI reserves the right to make changes, design modifications, corrections and other revisions as it sees fit, without notice. All products described herein are supplied in accordance with BPI's standard Terms and Conditions of Sale. This document is of a promotional nature only. Aspects of structural design, evaluation of product fitness for use, suitability or similar attributes are the responsibility of others.



BarSplice Products, Inc., 4900 Webster Street, Dayton OH 45414, USA

•Tel: (937) 275-8700 •Fax: (937) 275-9566

•E-mail: bar@barsplice.com